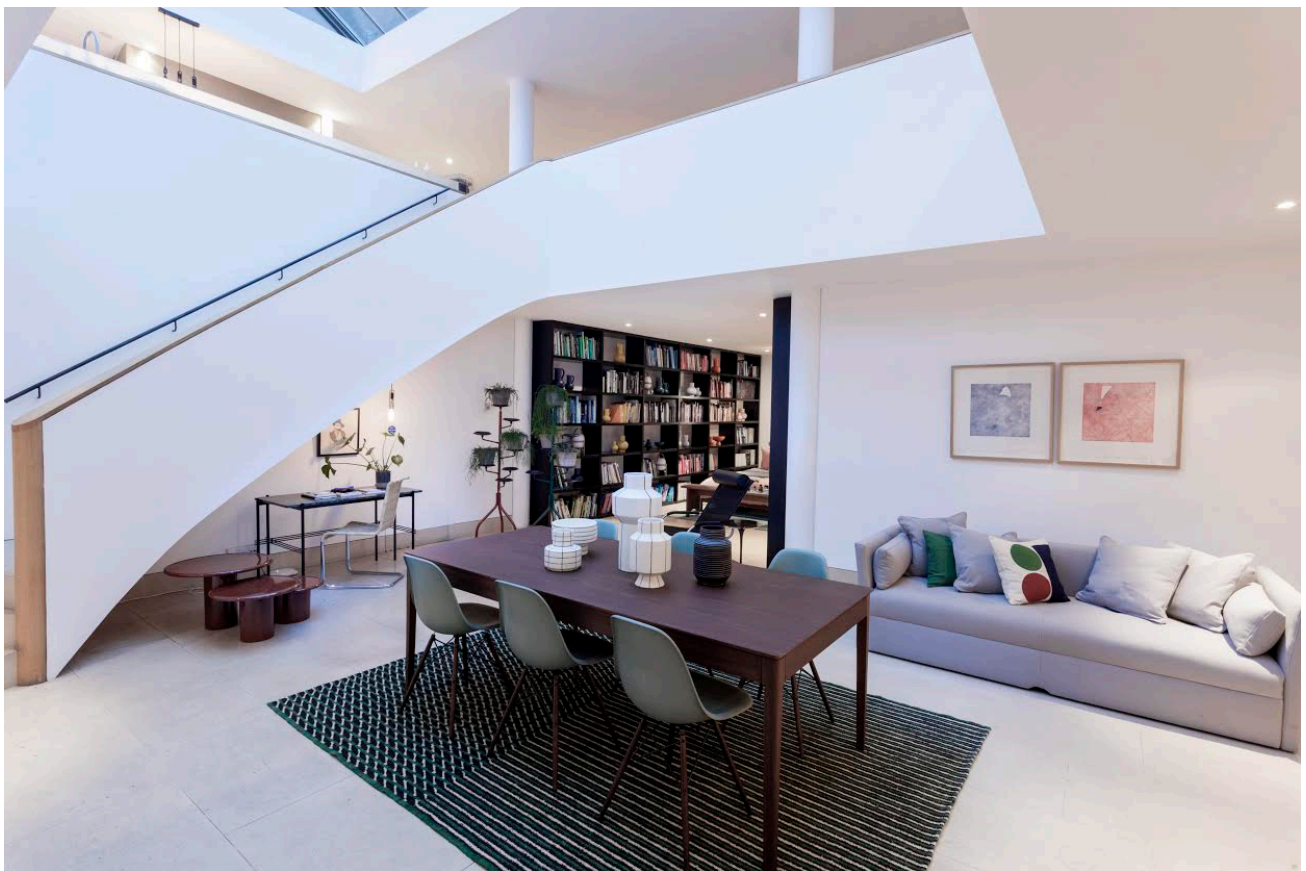


THE CONRAN SHOP

Press Release November 2018

SS19 at The Conran Shop

A tribute to 100 years of Bauhaus design



Founded in 1919 by German architect Walter Gropius, the Bauhaus was a hotbed of the era's most visionary creatives. It mixed craft, art, experimentation and industry to carve a new design language that prioritised functionality and honesty in materials and form.

Thirty years later, while studying at London's Central School of Art and Design, a young Sir Terence Conran embraced the principles of the Bauhaus. For Conran, as for Bauhaus members such as designer Josef Albers, weaver Anni Albers and artists Wassily Kandinsky and Paul Klee, design was for all, rather than a privileged few. He recognised the importance of beautiful, functional and accessible products, which have been integral to his businesses ever since.

THE CONRAN SHOP

For its SS19 collection, The Conran Shop marks the Bauhaus centenary and pays homage to the deep connection between these two international design institutions, presenting a unique collection of products from designers who are continuing the Bauhaus legacy 100 years on, including new exclusive collaborations with **Matthew Hilton**, **Samuel Wilkinson** and **Daniel Schofield**.

'Bold and curved forms accent this season's collection, with tonal colours such as burnt orange, blue and green featuring across the Furniture and Lifestyle collections. Iconic furniture from masters of modernism including Marcel Breuer, Ludwig Mies van Der Rohe, Le Corbusier, Charlotte Perriand are part of the edit from both familiar brands such as Cassina and Knoll and newly introduced German brand Tecta, which has been faithfully reproducing unfamiliar and exclusive licensed Bauhaus designs for over 60 years.'

– Campbell Thompson, Head of Furniture & Lighting Buying at The Conran Shop

Ranging from tubular metal furniture that echoes Marcel Breuer's iconic Wassily Chair to textiles inspired by colour theory and the grid, The Conran Shop's Bauhaus-inspired collection is divided into three core trends: **New Minimalism**, **Sobremesa** and **Tropical Modernism**.

NEW MINIMALISM

Defined by clean silhouettes and a muted colour palette, the New Minimalism trend has been inspired by the Bauhaus philosophy around the simplicity of craft. For SS19, The Conran Shop's buying team has taken inspiration from diverse areas across design, including from the 1990s fashion pioneers Jill Sander and Helmut Lang, 1960s bubble lighting by Helena Tynell and Gio Ponti's Pirelli building. What makes this form of minimalism 'new' is the warmth it radiates through tactility and imperfection: glazes featuring flecks and speckles; curved and angular lines; along with Picasso-inspired linework of the human face.

THE CONRAN SHOP



Blue was a big story for AW18 and will be carried through into the New Minimalism palette, together with reds and oranges inspired by Bauhaus artist Josef Albers's colourful abstract series, *Homage to a Square*. In a second wave of New Minimalism, these colours shift into rust and coral, paired with Prussian blue. Stripes and grids run throughout the new season collection, as does marble, guiding minimalism from cool and clinical to warm and inviting.

New Minimalism product highlights include:

- Daniel Schofield's **Blur Table** collection designed exclusively for The Conran Shop. Comprising a clear-cut glass top resting on an intricately crafted fluted glass base, these coffee and side tables fragment light to create a gentle visual distortion.
- The four-seater **Menton Sofa** has been designed exclusively for The Conran Shop by Matthew Hilton. Crafted in Italy, the sofa is upholstered in The Conran Shop's exclusive fabric edit with contrasting piping, and includes the option of loose or fixed covers.
- Jurre Groenenboom's innovative interiors statement, the **Loop Pendant Light**, available in black powder-coated aluminium and brushed brass finishes and adjustable to any height.

THE CONRAN SHOP

- **Gujurati Cushions** by The Conran Shop, woven by hand in India with a traditional check design and a hand-embroidered finish. Available in two sizes.
 - Colourful, graphic **Boxed Circle Cushions** in crisp linen, made using reverse appliqué and hand-guided machine embroidery techniques, by The Conran Shop
-

SOBREMESA

Named after the Spanish word for the time spent socialising after a meal, when diners typically enjoy a digestif, the Sobremesa trend celebrates the enjoyment of eating. The ambiance is social, reminiscent of alfresco meals during long summer evenings and the genial bustle beneath the striped awnings of a French market.



Strong colour combinations and artisanal touches are at the heart of Sobremesa. As with New Minimalism, orange is a dominant tone; though a more vibrant hue mixed with emerald green and Conran Blue, as seen in Alexandra Cummings' ceramics and the woven textiles of RCA student Sophie Graney. This season's ceramics feature matt chalky glazes and speckled finishes, creating an understated, rustic feel.

THE CONRAN SHOP

Sobremesa product highlights include:

- Crafted from teak wood, The Conran Shop's **Folding Rope Chairs** feature an easy-to-fold frame and a weatherproof nylon cord seat in natural and anthracite hues.
- **Tsuki Portable Outdoor Lights** by The Conran Shop – a family of rechargeable lamps in three sizes. The integrated LED bulb provides up to six hours of light from a single charge.
- Designed by Nicola Fasano exclusively for The Conran Shop, the **Trattoria Dinnerware Collection** is crafted in Puglia, using ancient techniques and finished with a hand-washed glaze. Available in mint, straw, orange and pool blue.
- Exclusive to The Conran Shop, Manufacture De Digoin's **Stoneware Kitchen & Dining Collection** of bowls, jugs, tumblers and plates is beautifully crafted in France from locally sourced materials and finished with coloured enamel.
- From The Conran Shop's in-house design team, **Cubed Grid Cushions** are made from high-quality Indian linen and decorated with hand-guided machine embroidery. Available in pink and tomato.
- Rectangular **Optic Line Cushions** by The Conran Shop, featuring a circle design and available in two colour combinations



THE CONRAN SHOP

TROPICAL MODERNISM

Modernism in warmer climes is the starting point for this trend – think Lina Bo Bardi's Casa de Vidro in Brazil, Corbusier's Villa Sarabhai in India and the botanical luxuriance of the Barbican Conservatory. It's glamorous and lighthearted, with curved cane pool loungers by Bauhaus-influenced Clara Porset and the citrus-yellow tubular outdoor furniture range, by Gae Aulent.

Accents of lemon, orange, mint and aqua pop against nude tones, and the ceramics adopt soft shades rather than the strong bright colours of the companion trends. Basketry and cane are key materials, a nod to the outdoor furniture of exotic countries. The Tropical Modernism trend is less about pattern and more about the layering and combination of colour.



Tropical Modernism product highlights include:

- Marcel Breuer's iconic **D4 Folding Chair** – originally designed in 1926 and now produced by Tecta, the d4 comprises webbed upholstery and a collapsible tubular stainless steel frame, making it ideal for compact spaces, and contemporary interior or exterior settings.

THE CONRAN SHOP

- Samuel Wilkinson's **Fold Sofa** designed for outdoor settings. Exclusive to The Conran Shop, the sofa's stainless steel tubular frame is crafted in Italy, and features a removable cushion upholstered in weatherproof Sunbrella fabric that can be removed and folded over the bent metal frame.
- Updated for 2018, the **Mag Tables** by Daniel Schofield comprise a ceramic top and base finished with a colourful glaze. Robustly crafted, the coffee and side tables are suited to both indoor or outdoor use.
- A contemporary reinterpretation of Sir Terence Conran's iconic **Cone Chair** design – a powder-coated steel frame, finished with a woven seat and circular cushion.
- **Grid** tableware from South African ceramics studio Wonki Ware. Featuring subtle weave and textural patterns in a washed black and natural colour glaze, each unique piece in this exclusive collaboration is handcrafted from clay dug in the Eastern Cape.



- Designed in-house, exclusive to The Conran Shop, and made from fine-quality Indian linen, **Anatolin Cushions** feature hand-guided machine embroidery and come in two colourways: straw and sky.

The Conran Shop's SS19 collection will launch in-store and online in February 2019.

THE CONRAN SHOP

ENDS CONTACT

For all product enquiries please contact Simone John (sjohn@conran.com) or Gabriella Soderling (gsoderling@conran.com) at The Conran Shop on +44 (0)20 7589 7401 Ext 3.

For wider stories please contact Jessica Knowles from Zetteler, The Conran Shop's PR team, at j.knowles@zetteler.co.uk or on +44 (0)20 3735 5855.

NOTES FOR EDITORS

About The Conran Shop

Founded by Sir Terence Conran in 1974, The Conran Shop has established itself as one of the leading lifestyle retailers in the world, offering an eclectic, hand-selected collection of gifts, furniture, lighting and personal accessories from some of the world's most respected designers and emerging talents. With its unique heritage, dedication to providing an unbeatable shopping experience and its carefully curated products, including vintage and modern designs, expert interior advice and personal services, The Conran Shop is the go-to destination for any type of gift or interiors inspiration. The Conran Shop currently has 10 stores across the world; three in London, one in Paris and six in Japan.

Website: conranshop.com

Instagram: [@theconranshopofficial](https://www.instagram.com/theconranshopofficial)

Facebook: [TheConranShop](https://www.facebook.com/TheConranShop)

Twitter: [@TheConranShop](https://twitter.com/TheConranShop)

Pinterest: [TheConranShop](https://www.pinterest.com/TheConranShop)